

# LU CHAO

## BLACK LIGHT



**GALERIE NATHALIE OBADIA**

PARIS - BRUXELLES

# LU CHAO

## BLACK LIGHT



**GALERIE NATHALIE OBADIA**

PARIS - BRUXELLES

## **BLACK LIGHT**

When I was a very small child I took the bus 217 everyday to go to school. Being small I was continuously squashed by a crowd of taller people pushing through, and it was often very hard to go in or out of the bus. The memory of this crowd often appears vividly in my mind. And so I am always very sensitive to crowd of people and the images of those where depression, helplessness and vulnerability are contained together always stayed with me as I grew up.

At the same time I always like to observe each person trying to squeeze his way in a crowd of people, because I know very well that I am just like them, and looking at each of their faces I seem to be looking at myself. I always think that each face can tell a story, the story of an experience already past or a prediction of an event about to happen. All the small black people in my paintings are my response to all the strangers I've encountered in my life.

I observe at the same time as I try to conjecture about each person I meet. And though I want to express the burden and uncertainty of life, I always think the greatest anguish in life is also its most beautiful part. While this thought may seem negative, and even depressing, it really makes me ever so curious about the next thing in life, just as sunlight illuminating an exuberant forest is beautiful, the part left in shadows possess their own mysterious kind of beauty because it is filled with pitch black light.









**Monument**  
Detail

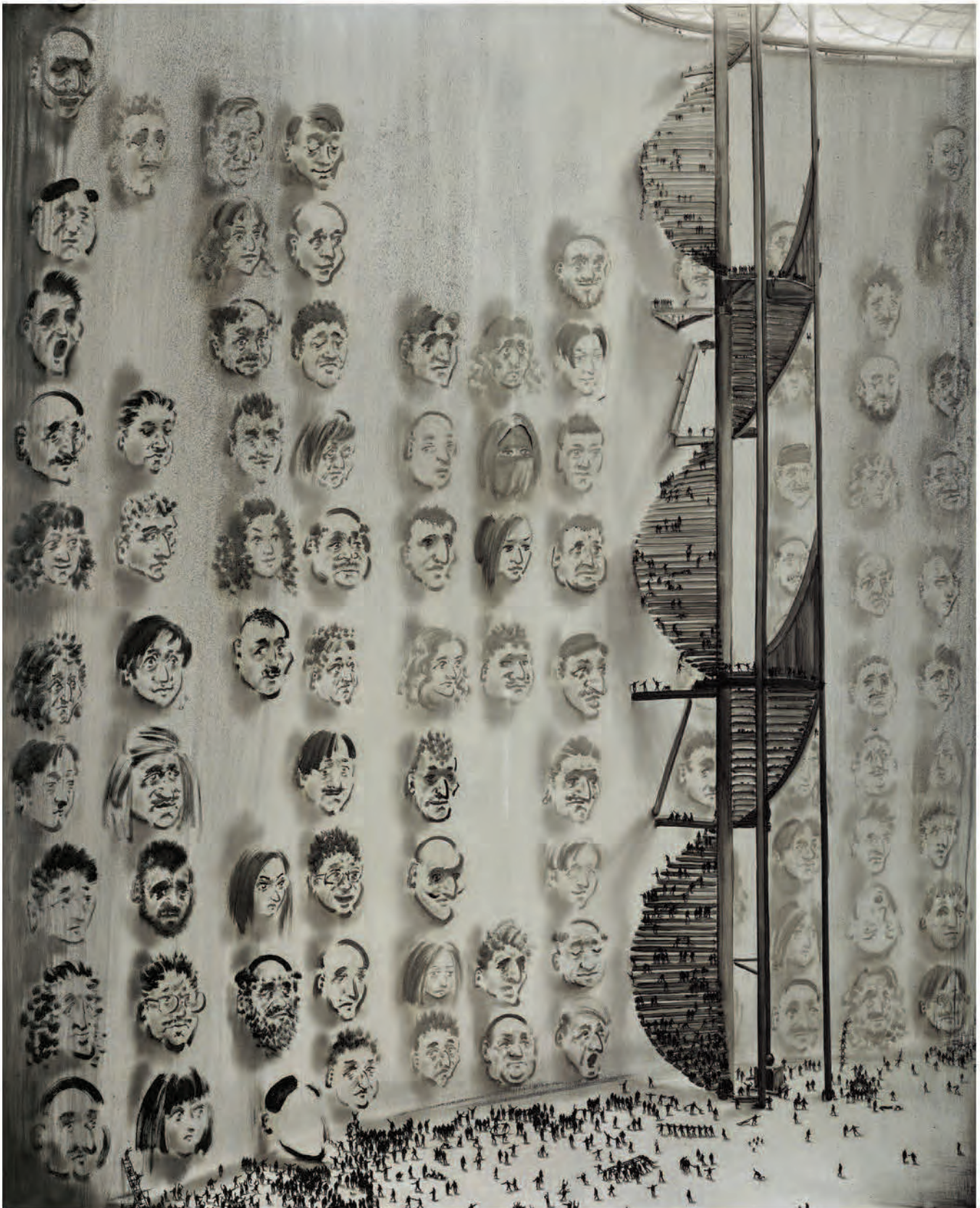
**Monument**  
Oil on canvas  
250 x 190 cm  
2015

**Black Mirror No.1**  
Oil on wood board  
56 x 49 cm  
2015









**Life Collection No.2**  
Oil on canvas  
150 x 120 cm  
2015







**Black Light**  
Oil on canvas  
150 x 400 cm  
2015









**Black Light**  
Detail 1





**Black Light**  
Detail 2

**Suspension No.1**  
Pencil on paper  
76 x 58 cm  
2015







**Suspension No.2**  
Pencil on paper  
76 x 58 cm  
2015



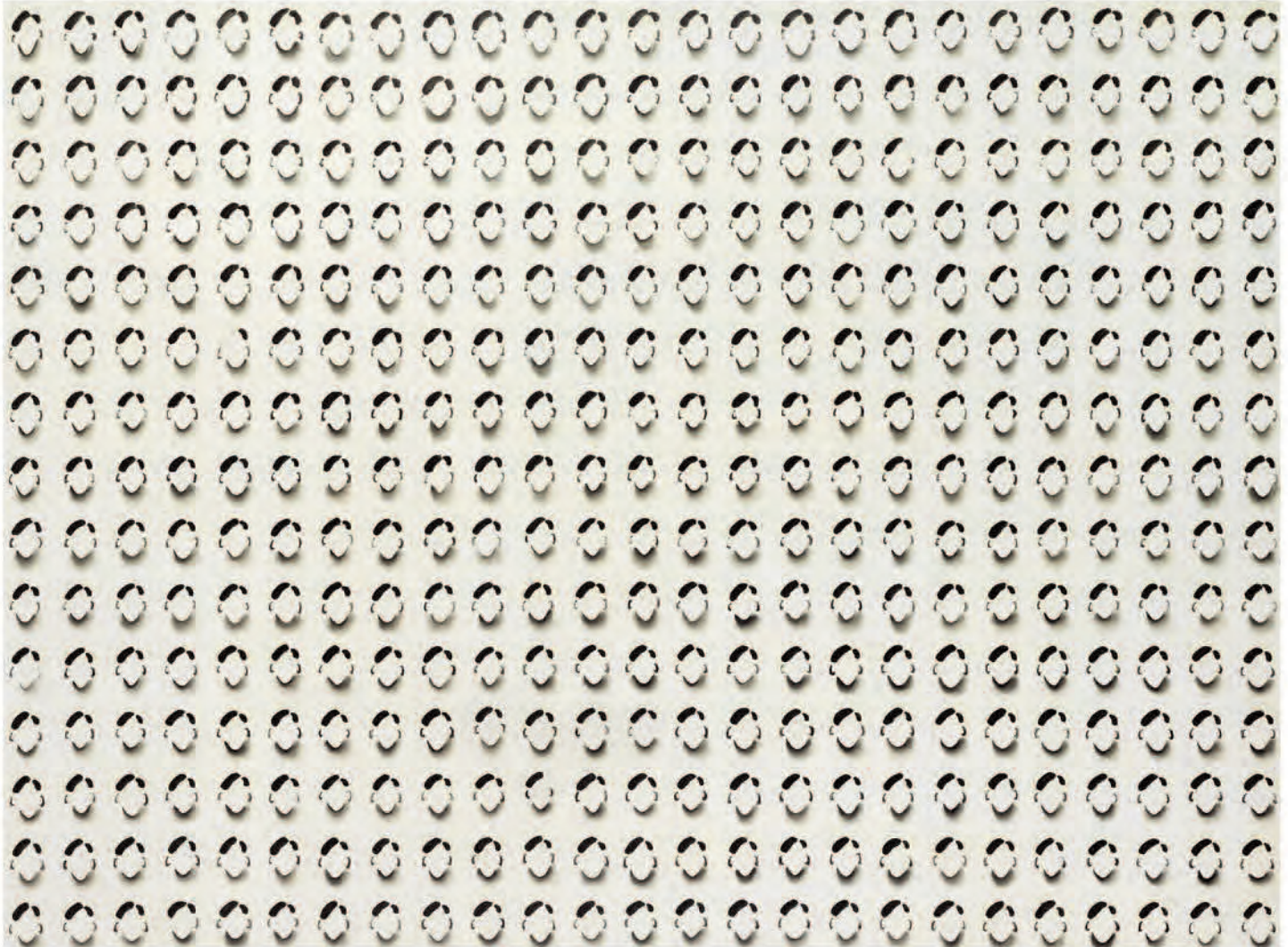








**Suspension No.3**  
Pencil on paper  
76 x 58 cm  
2015



**Try to Draw Two Same Face**  
Oil on canvas  
150 x 200 cm  
2015







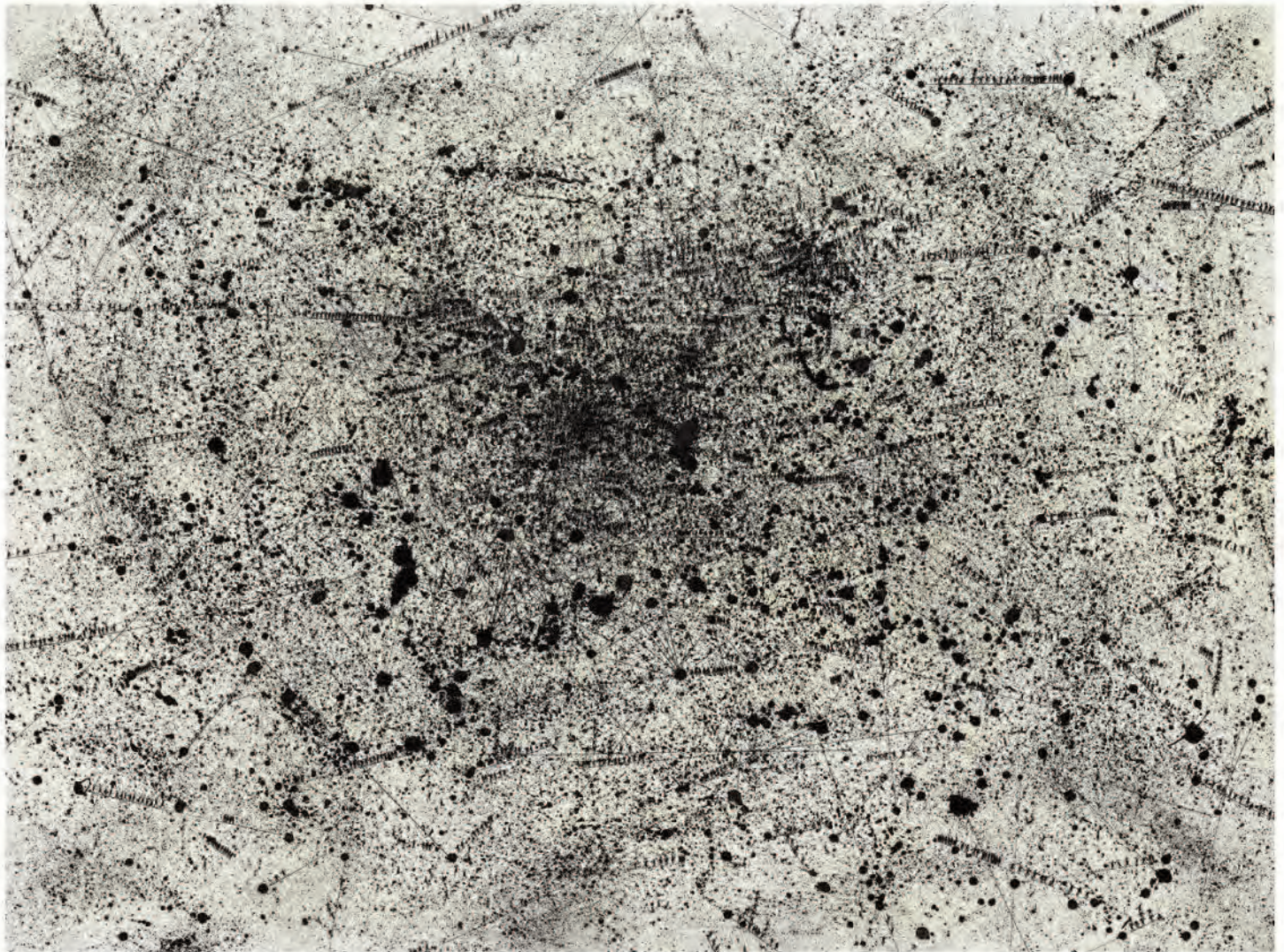
**Sink Hole**  
Oil on canvas  
150 x 200 cm  
2015





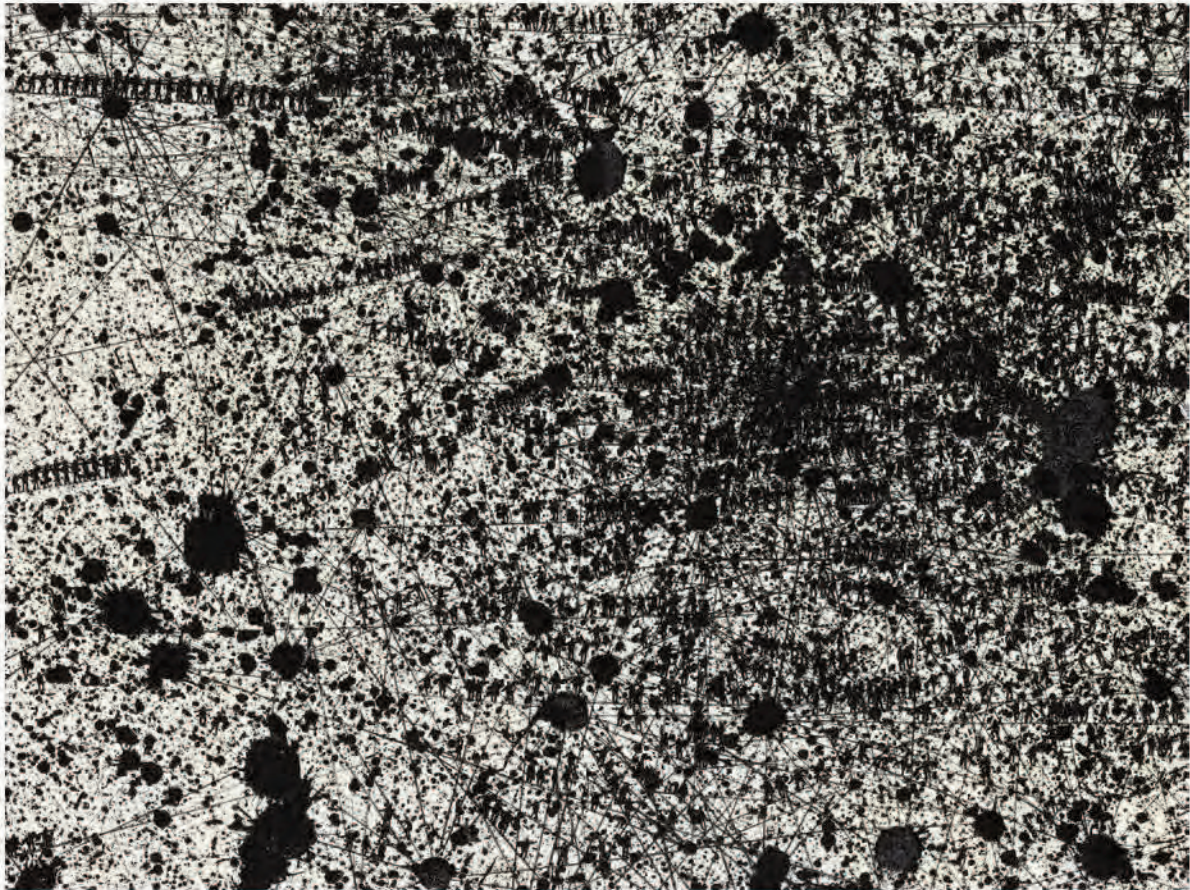
Sink Hole  
Detail





**Man on Wire**  
Oil on canvas  
150 x 200 cm  
2015





**Man on Wire**  
Detail

**A Game Between I & Me**  
Oil on canvas  
60 x 45 cm  
2015









**Spot Light with Branch**  
Oil on canvas  
120 x 150 cm  
2015







**Black Mirror No.2**  
Oil on wood board  
17 x 15 cm  
2015

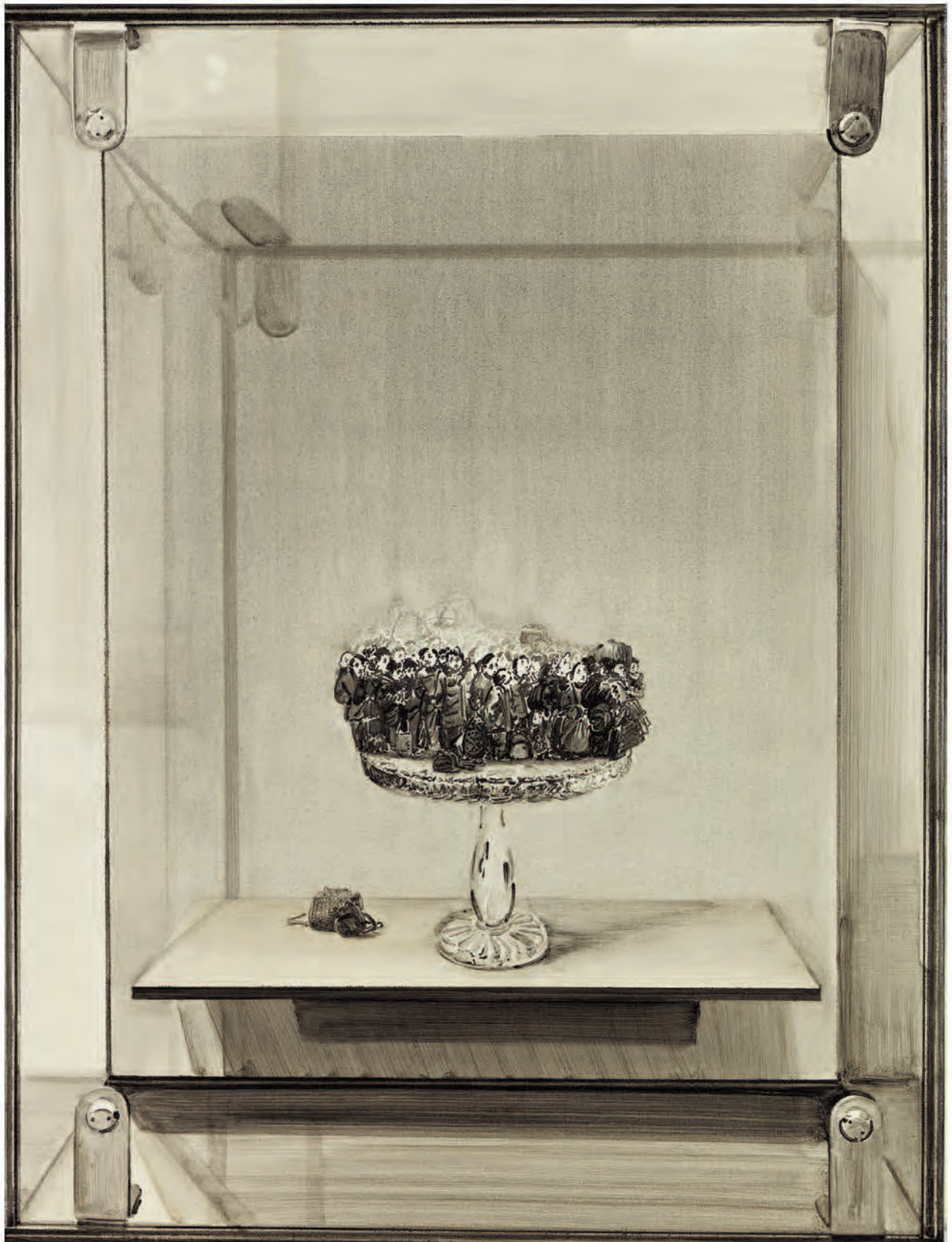




**Black Mirror No. 3**  
Oil on wood board  
15 x 14 cm  
2015







**A Cake Exhibition**  
Oil on canvas  
60 x 45 cm  
2016







**Elsewhere No. 3**  
Oil on canvas  
60 x 45 cm  
2016







**Container**  
Oil on canvas  
60 x 45 cm  
2016









**Balance**  
Detail

**Balance**  
Oil on canvas  
220 x 140 cm  
2016





**Free Fall**  
Oil on canvas  
45 x 60 cm  
2015





**Relic**  
Oil on canvas  
130 x 200 cm  
2016



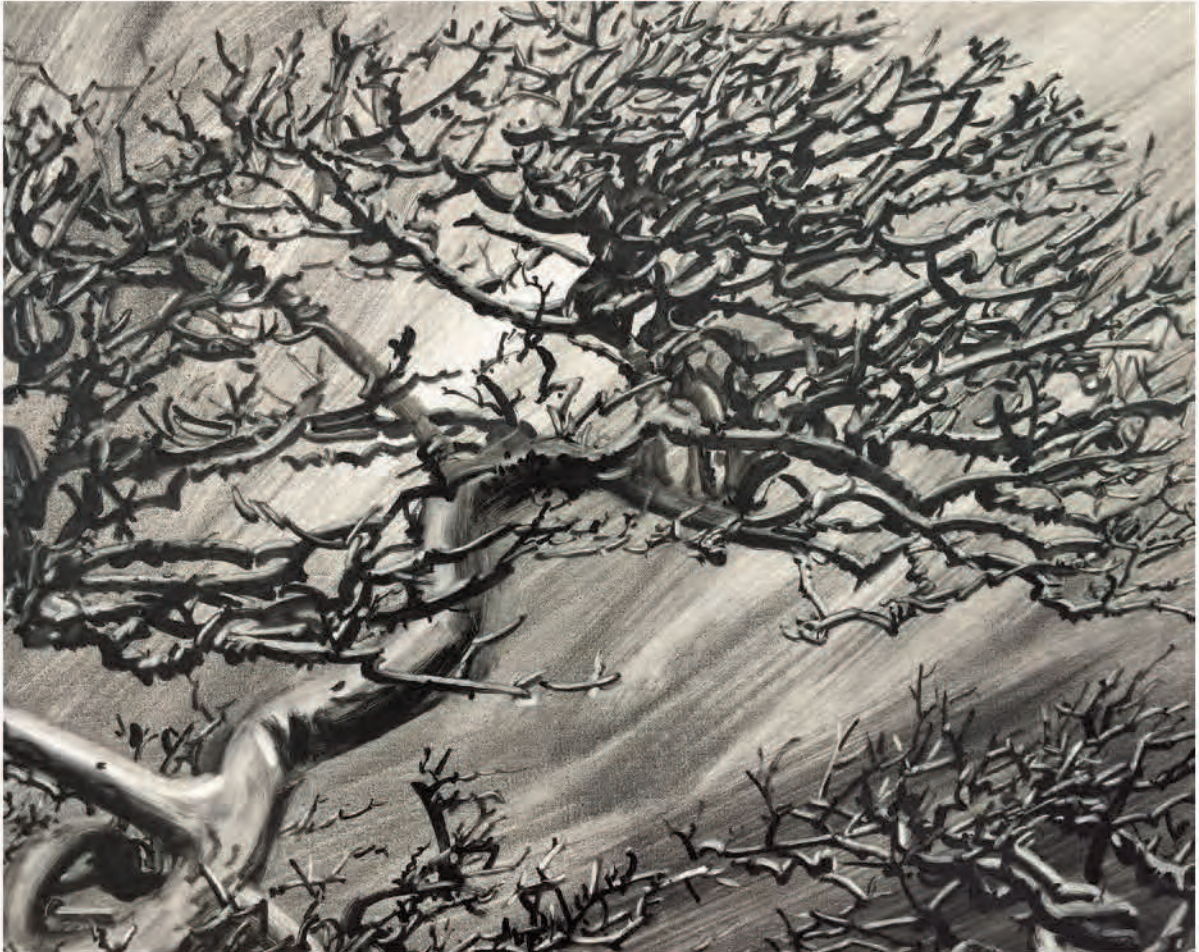
Relic  
Detail





**Elsewhere No. 1**  
Oil on canvas  
120 x 150 cm  
2015





**Elsewhere No. 1**  
Detail





**Elsewhere No. 2**  
Oil on canvas  
120 x 150 cm  
2015









**Forest Art Fair No.2**  
Oil on canvas  
120 x 150 cm  
2015







**Laboratory No. 4**  
Oil on canvas  
120 x 150 cm  
2015





**Misty Mountain No. 3**  
Oil on canvas  
95 x 190 cm  
2015





**Misty Mountain No. 3**  
Detail





**Art Fair No. 1**  
Oil on canvas  
121 x 152 cm  
2015



Art Fair No.1  
Detail





**Art Fair No. 2**  
Oil on canvas  
121 x 152 cm  
2015



Art Fair No.2  
Detail





**A Piece of Cake**  
Oil on canvas  
120 x 150 cm  
2015



**A Piece of Cake**  
Detail





**Monument**  
Huile sur toile  
250 x 190 cm  
2015



**Suspension No. 1**  
Crayon sur papier  
76 x 58 cm  
2015



**Try to Draw Two Same Face**  
Huile sur toile  
150 x 200 cm  
2015



**Spot Light with Branch**  
Huile sur toile  
120 x 150 cm  
2015



**Black Mirror No. 1**  
Peinture sur bois  
56 x 49 cm  
2015



**Suspension No. 2**  
Crayon sur papier  
76 x 58 cm  
2015



**Sink Hole**  
Huile sur toile  
150 x 200 cm  
2015



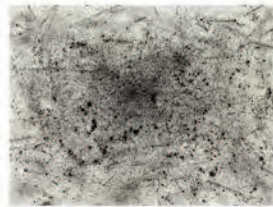
**Black Mirror No. 2**  
Peinture sur bois  
17 x 15 cm  
2015



**Life Collection No. 2**  
Huile sur toile  
150 x 120 cm  
2015



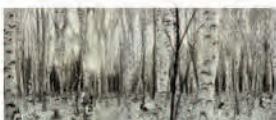
**Suspension No. 3**  
Crayon sur papier  
76 x 58 cm  
2015



**Man on Wire**  
Huile sur toile  
150 x 200 cm  
2015



**Black Mirror No. 3**  
Peinture sur bois  
15 x 14 cm  
2015



**Black Light**  
Huile sur toile  
150 x 400 cm  
2015



**A Game Between I & Me**  
Huile sur toile  
60 x 45 cm  
2015





**A Cake Exhibition**  
Huile sur toile  
60 x 45 cm  
2016



**Balance**  
Huile sur toile  
220 x 140 cm  
2016



**Elsewhere No.2**  
Huile sur toile  
120 x 150 cm  
2015



**Art Fair No.1**  
Huile sur toile  
121 x 152 cm  
2015



**Elsewhere No.3**  
Huile sur toile  
60 x 45 cm  
2016



**Free Fall**  
Huile sur toile  
45 x 60 cm  
2015



**Forest Art Fair No.2**  
Huile sur toile  
120 x 150 cm  
2015



**Art Fair No.2**  
Huile sur toile  
121 x 152 cm  
2015



**Relic**  
Huile sur toile  
130 x 200 cm  
2016



**Laboratory No.4**  
Huile sur toile  
120 x 150 cm  
2015



**A Piece of Cake**  
Huile sur toile  
120 x 150 cm  
2015



**Container**  
Huile sur toile  
60 x 45 cm  
2016



**Elsewhere No.1**  
Huile sur toile  
120 x 150 cm  
2015



**Misty Mountain No.3**  
Huile sur toile  
95 x 190 cm  
2015



## BIOGRAPHY

- 2014 Graduated from Painting Department (M.A.),  
Royal College of Art, London, U.K.
- 2012 Graduated from Oil Painting Department (B.A.),  
Central Academy of Fine Arts, Beijing, China.
- 1988 Born in Shenyang, Liaoning Province, China.

## SOLO EXHIBITIONS

- 2016 *Black Light*, Galerie Nathalie Obadia, Paris, France.
- 2015 *2015 Art Basel Hong Kong - Lu Chao: Black Mirror*,  
Hadrien de Montferrand Gallery, Hong Kong, China.
- 2013 *Lu Chao: Black Forest*,  
Hadrien de Montferrand Gallery, Beijing, China.

## GROUP EXHIBITIONS

- 2016 *Zuna Maco*, Rosenfeld Porcini Gallery, Mexico City, Mexico.
- 2015 *Art O21*, Hadrien de Montferrand Gallery, Shanghai, China.  
*CIGE*, Hadrien de Montferrand Gallery, Beijing, China.  
*Elsewhere*, Lychee One, London, U.K.  
*Around Drawing*, Rosenfeld Porcini Gallery, London, U.K.  
*Cos Moscow*, Rosenfeld Porcini Gallery, London, U.K.  
*2015 Art Brussels*, Hadrien de Montferrand Gallery,  
Brussels, Belgium.  
*Art Taipei*, Forbidden City Gallery Taipei.
- 2014 *Saatchi New Sensation Shortlist*, Victoria House, London, U.K.  
*Life and Hope*, French Institute, Beijing, China.  
*A New Circle*, Forbidden City Gallery, Shanghai, China.  
*River Light RCA Studio Summer Exhibition*, RCA Studio,  
London, U.K.  
*Royal College of Art Graduation Exhibition*, Royal College of Art,  
London, U.K.  
*London Design Festival 2014*, Mint Gallery, London, U.K.  
*RCA Secret*, Royal College of Art, London, U.K.  
*SOHO Art Festival 2014*, London, U.K.  
*2014 Art Brussels*, Hadrien de Montferrand Gallery,  
Brussels, Belgium.

- 2013 *The Others*, Hanmi Gallery, London, U.K.  
*Open Work*, London, U.K.  
*Drawing Now Art Fair*, Le Carrousel du Louvre, Paris, France.  
*2013 Art Brussels*, Brussels, Belgium.  
*RCA Secret*, Dyson Gallery, Royal College of Art, London, U.K.  
*New Figuration: Chapter 1*, Hadrien de Montferrand Gallery,  
 Beijing, China.  
*Multiculturalism is Dead*, Bethnal Green Church, London, U.K.  
*Royal College of Art student show*, Royal College of Art,  
 London, U.K.
- 2012 *Works from Students at the Royal College Of Art*,  
 Royal College of Art, London, U.K.
- 2011 *Exhibition of Contemporary Art*, Snow Mountain Music Festival,  
 Lijiang, China.  
*Group Show*, Central Academy of Fine Arts, Beijing, China.  
*Enigma*, Up Space, Beijing, China.

#### **AWARDS**

- 2014 *Painter-Stainers Goron Luton Award*, Royal College of Art,  
 London, U.K.  
*Solo Award Runners Up*, London, U.K.  
*RCA Studio*, London, U.K.
- 2013 *Lucy Halford Bursary*, Royal College of Art, London, U.K.
- 2012 *Best Creative Awards*, Central Academy of Fine Art,  
 Beijing, China.
- 2011 *Excellent Sketching Award*, Central Academy of Fine Art,  
 Beijing, China.
- 2010 *Silver Prize*, Giant Cup Today National Art Students Annual Awards  
 2010, Today Art Museum, Beijing, China.



Ce catalogue a été publié par  
la Galerie Nathalie Obadia, Paris  
à l'occasion de l'exposition  
*Black Light* de Lu Chao,  
du 14 Avril au 21 Mai 2016.

**Graphisme**

En Ville Studio / Camille Rousseau  
[www.envilleintown.com](http://www.envilleintown.com)

**Texte**

Lu Chao et  
la Galerie Hadrien de Montferrand

**Remerciements**

Guo Dandan  
Galerie Hadrien de Montferrand

**Galerie Nathalie Obadia**

[www.nathalieobadia.com](http://www.nathalieobadia.com)

3, rue du Cloître Saint-Merri  
75004 Paris  
+33 (0)1 42 74 67 68 Tel  
+33 (0)1 42 74 68 66 Fax  
[info@nathalieobadia.com](mailto:info@nathalieobadia.com)

8 rue Charles Decoster  
1050 Bruxelles  
+32 (0)2 648 14 05 Tel  
+32 (0)2 648 14 06 Fax  
[infobxl@nathalieobadia.com](mailto:infobxl@nathalieobadia.com)